

animeo® IP

Automated Total

# Solar Management

-  —
-  —
-  —
-  —
-  —
-  —
-  —



# Introduction

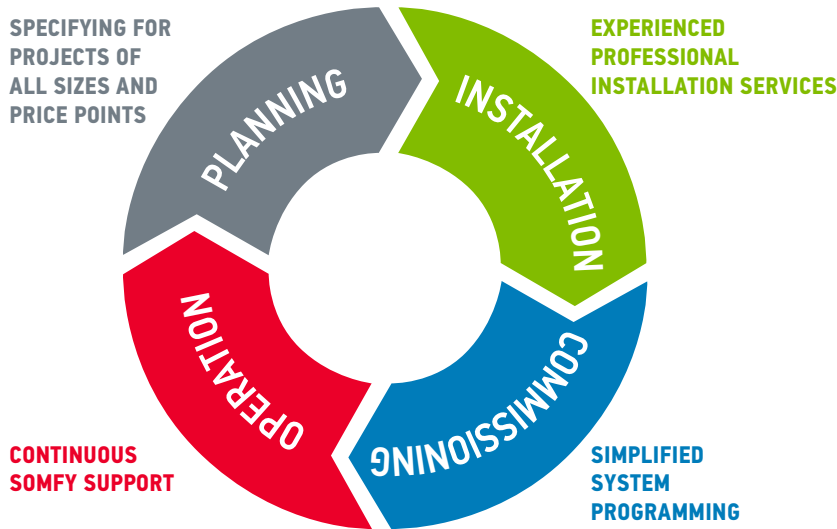


SOMFY® is the leading global manufacturer of strong, quiet motors with electronic and app controls for interior and exterior window coverings. Over 270 million users worldwide enjoy the more than 150 million motors produced by Somfy. During the past 40+ years, Somfy engineers have designed products for both the commercial and residential markets to motorize window coverings such as interior shades, wood blinds, draperies, awnings, rolling shutters, exterior solar screens and projection screens. Somfy motorization systems are easily integrated with security, HVAC and lighting systems providing total home or building automation.

Somfy's Commercial Building Solutions offer a wide range of intelligent motors and controls that optimize the utilization of natural light in your commercial workspace. Our systems are calibrated to maximize occupant comfort while enhancing the visual environment, minimize solar glare and heat gain, and provide UV protection. Somfy's natural light control and automation systems are scalable in design; offered in low voltage, line voltage or wireless options; and are perfect for projects of any size or budget. Somfy's Commercial Specification team hold LEED® professional credentials and will support all aspects of any project, from specification through commissioning.

## Working with you from specification to maintenance

Thousands of shade manufacturers around the world choose Somfy motors to bring their natural light control products to life. Somfy's nationwide Commercial Specification Team will work with you to find the right manufacturer and support your project every step of the way.



OFFICES



EDUCATION



HOSPITALITY



HEALTHCARE

# Introducing animeo® IP

animeo® IP is a total natural light management system utilizing Somfy-powered intelligent motorized window coverings as well as digital keypads and weather sensors. The system's controllers, sensors and keypads can be added to both new and existing Somfy Digital Network™ (SDN) motor installations for comprehensive solar management as either a stand-alone solution or integrated into third party control systems.



An intuitive user interface allows for simplified commissioning, building management and technical support featuring drag-and-drop programming, motor auto discovery, and at-a-glance real-time system status updates.

## animeo® IP Benefits

Creates an overall better work environment

Benefit	Building Owner	Architect	Facility Manager	Engineer	Occupant/Tenant
<b>Energy Efficiency</b> 	<ul style="list-style-type: none"> <li>Reduce heat gain</li> <li>Save on HVAC equipment costs</li> </ul>	<ul style="list-style-type: none"> <li>Reduce heat gain and cooling loss</li> <li>Wider selection of glazing options</li> </ul>	<ul style="list-style-type: none"> <li>Reduce lighting and HVAC demand during occupied and unoccupied times</li> </ul>	<ul style="list-style-type: none"> <li>Optimizes building performance</li> </ul>	<ul style="list-style-type: none"> <li>Reduce the power consumption from artificial light</li> </ul>
<b>Scalability &amp; Flexibility</b> 	<ul style="list-style-type: none"> <li>Improve building façade appearance</li> <li>Reduce glare in work environment</li> </ul>	<ul style="list-style-type: none"> <li>Solar Depth Entrance Management offers options for positioning workspaces</li> </ul>	<ul style="list-style-type: none"> <li>Enter the distance between windows and work areas in animeo IP to manage solar depth entrance management</li> </ul>	<ul style="list-style-type: none"> <li>Assist during design phases to create a productive and comfortable working environment</li> </ul>	<ul style="list-style-type: none"> <li>Manage natural daylight</li> <li>Minimize glare</li> </ul>
<b>Compatibility</b> 	<ul style="list-style-type: none"> <li>Easily add to existing SDN installations</li> </ul>	<ul style="list-style-type: none"> <li>One system fits buildings of all sizes</li> </ul>	<ul style="list-style-type: none"> <li>System functionality and operation remains simple for a single office or an entire building</li> </ul>	<ul style="list-style-type: none"> <li>The system could support the functionality of multiple building types</li> </ul>	<ul style="list-style-type: none"> <li>System easily adapts to the specific needs and requirements of the workspace</li> </ul>
<b>Comfort</b> 	<ul style="list-style-type: none"> <li>Reduces the complexity of automated solar shading solutions</li> </ul>	<ul style="list-style-type: none"> <li>Simple to design, install and commission</li> </ul>	<ul style="list-style-type: none"> <li>Easy to adjust functionality of motors or controls from Graphical User Interface</li> <li>Control entire building from one computer</li> </ul>	<ul style="list-style-type: none"> <li>System is simple to understand, design and build</li> </ul>	<ul style="list-style-type: none"> <li>Override automatic control via in-wall keypads, virtual computer keypads and mobile devices</li> </ul>
<b>Building Certification</b> 	<ul style="list-style-type: none"> <li>Follow local building codes and requirements</li> <li>Contribute towards earning LEED credits</li> </ul>	<ul style="list-style-type: none"> <li>The Somfy Specification Team hold LEED professional credentials and provide support during the design phase</li> </ul>	<ul style="list-style-type: none"> <li>Somfy supports LEED based design and commissioning for the system installed in your building</li> </ul>	<ul style="list-style-type: none"> <li>Earn more LEED points during the design phase of a project</li> </ul>	<ul style="list-style-type: none"> <li>LEED buildings show a higher occupant satisfaction in areas like perceived productivity, indoor air quality and thermal comfort.*</li> </ul>

\* U.S. Green Building Council, "The Business Case for Being Green." July 2012.

# Benefits of animeo® IP



Energy Efficiency



Scalability & Flexibility



Compatibility



Comfort



Building Certification

## Natural Light Management

Automatically managing motorized window coverings reduces dependency on artificial light, allowing more natural light for increased visual comfort of occupants as well as energy savings.

### Extended Daylight Zone Automated Shades

A **daylight zone** is an area within a building that is expected to receive consistent daylight.

**Manual shades** are rarely adjusted thus reducing the daylight zone.

**Automated shades** increase the daylight zone, adjusting to the specific sky and weather conditions.



## Energy savings

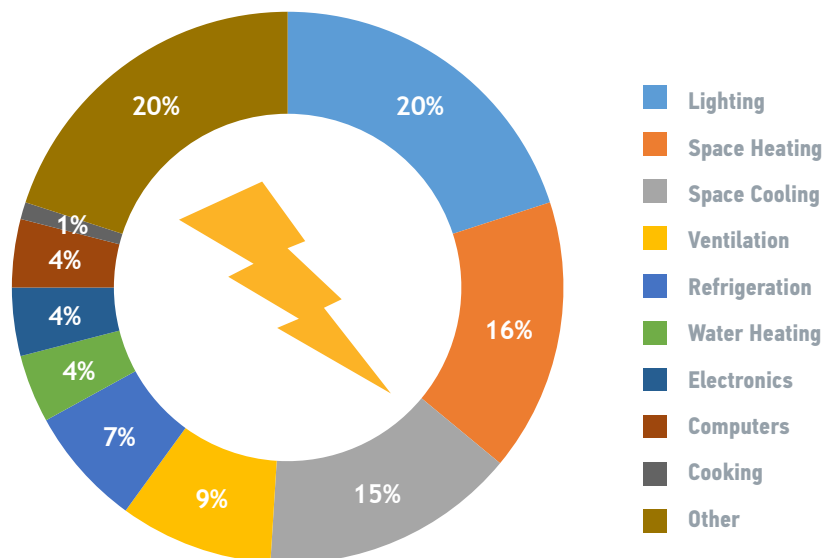
### Capturing Natural Light Saves Energy

#### Commercial Buildings Primary Energy End Use Splits

20% of energy end usage in a typical office building is spent on lighting. Automated solar control management can use natural light to reduce the requirement for artificial lighting and ensure solar gains for passive room heating.

DOE, 2011 Buildings Energy Data Book, Section 3.1.4, March 2012. <http://buildingsdatabook.eren.doe.gov/>

Energy usage varies based on geographical locations.





## Dynamic Insulation™

Automated window coverings are raised and lowered according to changes in outdoor weather conditions and indoor comfort needs based on input from sensors, pre-programmed settings, or local occupant controls.

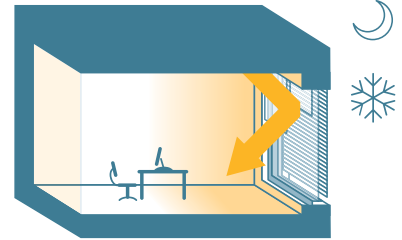
And with animeo® IP's sun sensor functions, the process is automated to ensure the reality of energy savings.

### Summer strategy



Lower window coverings during the hottest part of the day to reduce heat gain.

### Winter strategy



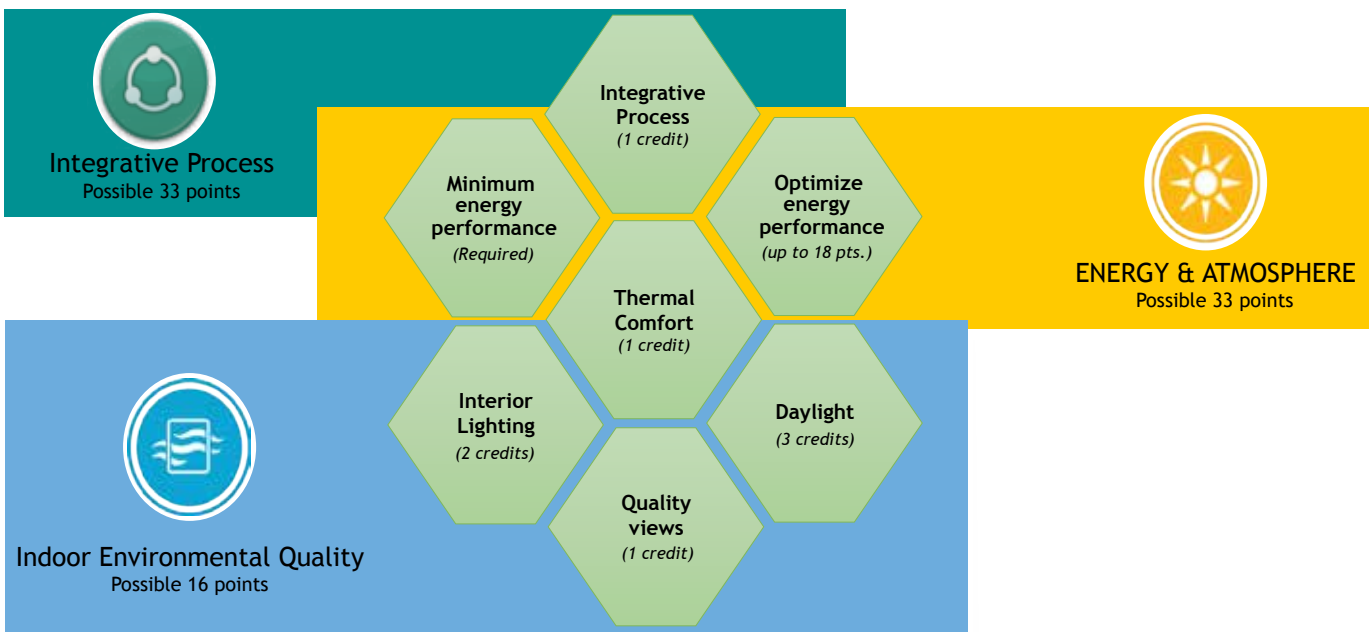
Lowered window coverings prevent heat loss through windows during nighttime hours.

## Earn LEED® Credits

Somfy is one of your key partners for LEED certification. Somfy solutions, including building control with animeo® IP, provide the opportunity to obtain multiple LEED points using a holistic approach.



Automation in commercial buildings contributes to earning LEED points in the following categories:



USGBC® and the related logo are trademarks owned by the U.S. Green Building Council® and are used with permission.

# Meeting the Challenge: Why animeo® IP?

## animeo® IP System Features

### Sun sensor control

animeo IP offers automated natural light management based on the sun's position in the sky and façade orientation to minimize glare and maximize the opportunity for capturing natural light.



### Solar Entrance Depth Management

During active sun tracking periods, animeo IP's Solar Entrance Depth Management feature will adjust and maintain the solar shade height to limit the distance that sunlight enters the space. This results in the ability to protect furnishings, maximize daylight availability and minimize glare on workspaces to improve occupant comfort.



### Control Versatility

Programmable wall-mounted keypads, wireless controls and virtual keypads provide occupants control over nearby window coverings. animeo IP can override manual occupant commands during specific time periods (ex: east façade from 8 AM - 12 PM) to keep the building running as efficiently as possible, providing just the right balance of manual and automated control.



Facility Manager View



animeo® IP Digital Keypad



Virtual Keypads

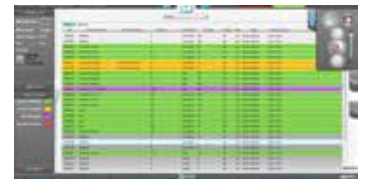
### Compatibility

animeo IP is compatible with existing SDN installations, at any point in system design, including external weather sensors, in-wall keypads, wireless sensors, and third party building management systems.



### Facility Management

SDN technology provides bi-directional status reporting of window covering positions. With this information, animeo IP exports system status snapshots in convenient graph or table form. Quickly see how and why shades were adjusted with simple color codes for timed events, occupant actions or building overrides. Facility managers can also receive systems alerts via email.



### Streamlined Commissioning Process

Auto-discovery of motors and switches expedites installation while drag-and-drop configuration simplifies commissioning.



### Real and Astronomic Timed Events

With animeo IP's timed events feature, schedules can be created to keep buildings energy efficient based on certain times of day. Creating timed events around periods of high occupancy (between 8:00AM and 6:00PM, Monday through Friday) and low occupancy (weekends, holidays) ensures the building is running as efficiently as possible.



### Sensors

A variety of Somfy weather sensors are compatible with animeo IP, including rain, wind, sun and temperature sensors. Sensor configuration and setup is easy using animeo IP's intuitive user interface.



Compact Sensor

Sensor Station

# What animeo® IP Can Do for Your Project

animeo IP is a hardware and software solution that combines configuration and control software in one comprehensive package. By managing a full range of intelligent motors from a single source, animeo IP presents a stronger, more customizable solution that meets today's requirements for building certification while increasing occupant comfort.

animeo IP performs in installations across all vertical market segments including Offices, Hospitality, Education and Healthcare.

## Flexible and Scalable

animeo IP maximizes the performance of Somfy Digital Network solutions by adding a main Building Controller and client software with an intuitive graphic user interface. Sub Controllers increase system capacity to meet project requirements. The animeo IP range also includes sun, wind and temperature sensors which optimize natural elements for increased occupant comfort and energy efficiency.



SYSTEM CONFIGURATION	STAND ALONE	animeo® IP
Supports Somfy AC and DC Intelligent Motors	✓	✓
Wired and Wireless Controls	✓	✓
Time Scheduled Events	✓	✓
Integrate with BMS Systems	✓	✓
Scalability	✓	✓
Sun Sensor Monitoring		✓
Solar Entrance Depth Management		✓
Virtual Keypads		✓
Remote Access		✓
Complete Weather Sensor Station		✓
Sensor Weather Station		✓
Graphical System Status and Position Updates		✓
Configuration with Auto-Discovery		✓

# Somfy's Scalable Solutions

animeo® IP leverages the reliability and scalability of Somfy Digital Network™ (SDN) technology while adding the benefits of automation and simplified, centralized control.

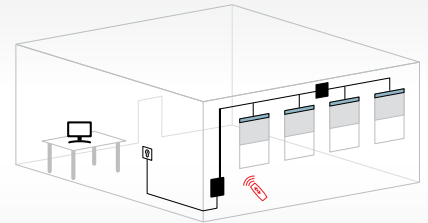




Below is an example of how scalable Somfy solutions are. From a single room, to individual floors or rooms, to an entire building, animeo® IP and Somfy Digital Network™ (SDN) installations are suitable for every jobsite.

### Single Room

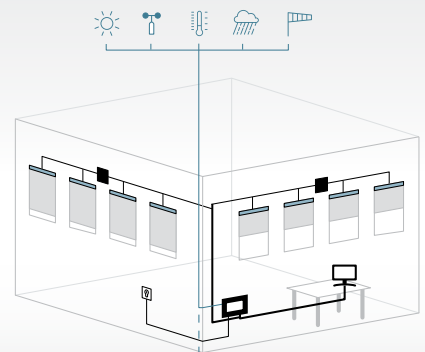
For smaller installations, a standard Somfy Digital Network installation is a powerful yet economical solution. Local controls, including Somfy's full range of wired and wireless controls, can be added for convenient access.



### Individual Floor



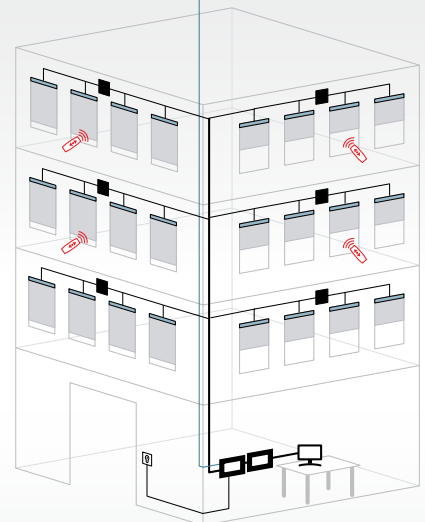
To automate up to 200 motorized shades based on sun, wind, temperature and rain thresholds, incorporate animeo IP into a Somfy Digital Network installation for the next level of control. animeo IP uses a dedicated range of sensors as well as schedules for automated solar management while still allowing occupants to make adjustments using in-wall keypads or virtual keypads. The system's graphic user interface simplifies commissioning, operation and troubleshooting.



### Multiple Floors or Entire Building



For installations greater than 200 motors, add animeo IP Sub Controllers to expand system capacity (1 for every additional 200 motors). The scalable technology of both Somfy Digital Network and animeo IP make them ideal solutions for larger installations where centralized control is a necessity. animeo IP can also be integrated into third party BMS, EMS and AV systems.





# Somfy Digital Network™ (SDN)



SDN 2.0 products are backed by a SDN 2.0 Certified Quality Promise which means these products have been designed to meet the highest standards for Somfy Digital Network system components and validated by Somfy engineers. Systems designed using SDN 2.0 certified products are easier to install, more reliable, and improve overall system performance.



### Power Panel

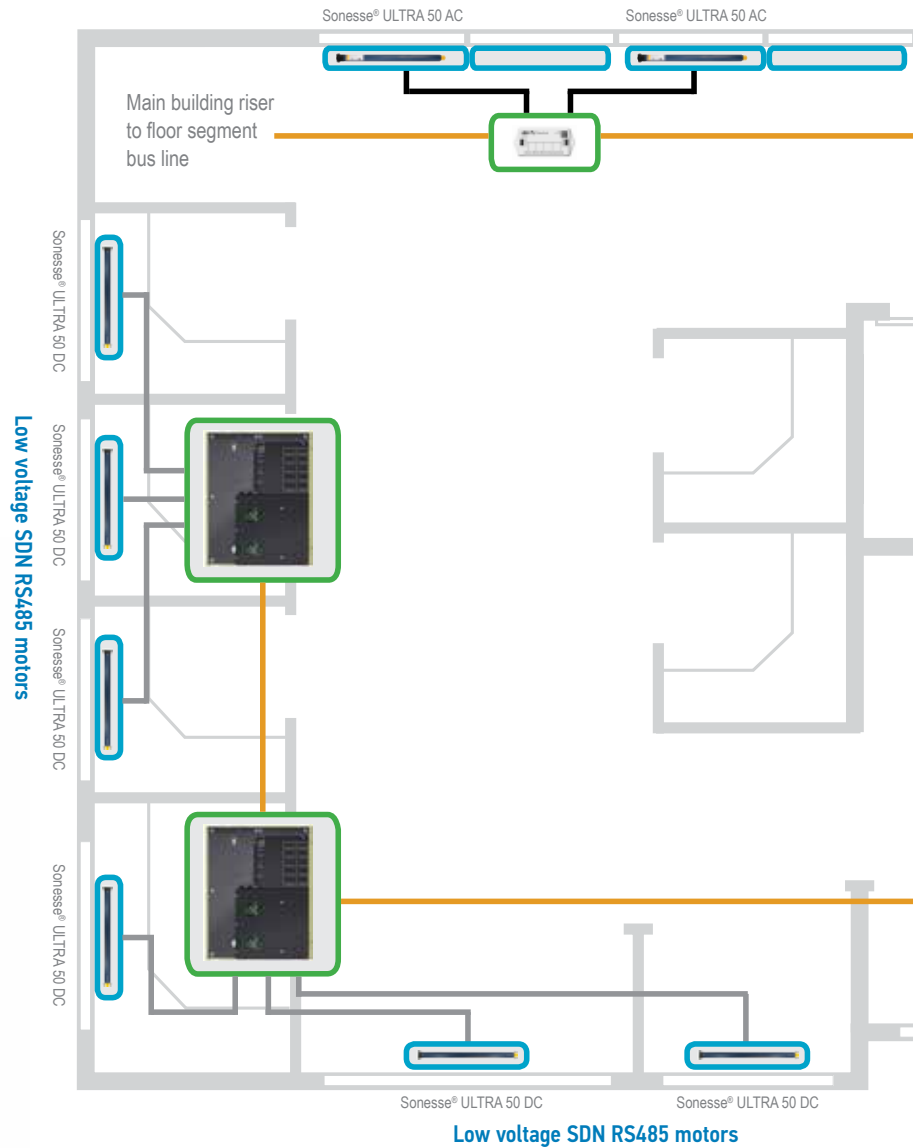
- Low voltage transformer (24V DC)
- Provides power and data over a 14 AWG power pair, 22 AWG stranded, twisted and shielded data triad with a 24 AWG drain wire
- Ability to connect user interfaces
- Provides motor power using the Somfy Low Voltage Motor Cable offered through Liberty AV. (Model 9020126 or 9020127)

Powered by standard outlet or junction box



## Line and Low Voltage

### Line voltage SDN RS485 motors (Optional coupled/banding application)



### RTS Receiver for SDN

### RTS Transmitter

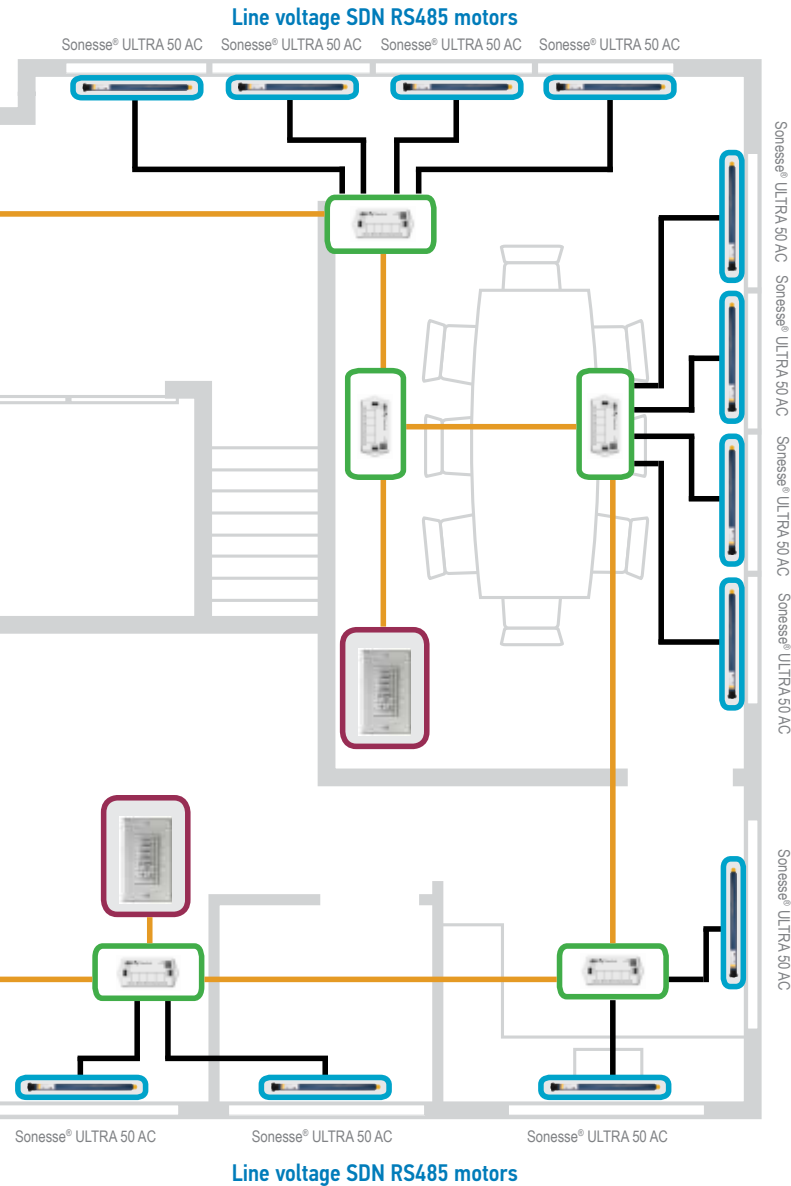
### Digital Keypad

### Virtual Keypad



- Fully programmable
- Individual motor and group motor functionality
- Up to 5 preset positions and full Up, Stop, Down functionality

Somfy's line and low voltage solutions featuring the intelligent Sonesse® 50 and Sonesse® 30 motor lines offer ultra-quiet operation along with greater strength and quality than other motor options offered by industry competitors. Somfy's line and low voltage motors and controls are a stand alone solution, or can communicate as an automated building network using animeo® IP, providing the most flexible complete network solution available.



### Sonesse® ULTRA 50 DC RS485 Low voltage motor (24V DC)



- Ultra quiet operation
- Ultra powerful operation
- Wide range of control options
- Fully programmable
- Power and data connection from the bus line



**Powered by the Power Panel for SDN or a standard outlet using a plug in power supply**

### animeo® IP

- Provides connection from the Somfy Digital Network™ (SDN) to the building network  
Can be placed anywhere in the building



**Powered by standard outlet or junction box**



### Sonesse® ULTRA 50 AC RS485 Line voltage motor (120V AC)



- Ultra quiet operation
- Ultra powerful operation
- Wide range of control options
- Fully programmable



**Powered by standard outlet or junction box**

### 5 Port Data Hub and Data Hub Plus



- Allows digital communication from the bus line to controls and line voltage (AC) motors.
- Increase motor connections along the bus line.

### Power Panel



### Data Panel



Use the Somfy Low-voltage Motor Cable offered through Liberty AV for all low-voltage SDN motor installations

4 Conduit 26AWG modular cable with RJ9 and an RJ45 connector for Sonesse® 50 motor wiring

BUS LINE

MOTOR

BUS DISTRIBUTION

USER INTERFACE



# Intuitive Graphic User Interface

A standout feature of animeo® IP is its graphic user interface. There are four main system views: Façade, Group, List and Floor Plan. The Floor Plan view offers facility managers a dynamic snapshot of system status and indicators in an easy-to-understand floor plan format as well as convenient access to controls and critical system information.

## Floor Plan View

The screenshot shows the Floor Plan View interface with several callouts:

- Easily access other floors:** Points to the 'First Floor' dropdown menu at the top of the floor plan.
- Switch between multiple views:** Points to the view selection icons (Floor Plan, Group, List, Façade) at the top.
- Right click keypads to emulate user commands for convenient troubleshooting:** Points to a keypad icon on the floor plan.
- Scale and zoom:** Points to the zoom controls on the right side.
- Master keypad for facility manager control of façades, zones or individual motors:** Points to a large control panel on the right.
- Real-time information from weather sensors:** Points to the 'Weather Info' section in the left sidebar.
- Weather forecast information:** Points to the 'Forecast' section in the left sidebar.
- System errors and notifications:** Points to the 'System Info' section in the left sidebar.
- Hover over motors or keypads to view detailed information including associated devices:** Points to a tooltip for a 'Customer Service' keypad.
- Color-coded motor statuses:** Points to the color-coded keypad icons at the bottom of the floor plan.

## Façade View



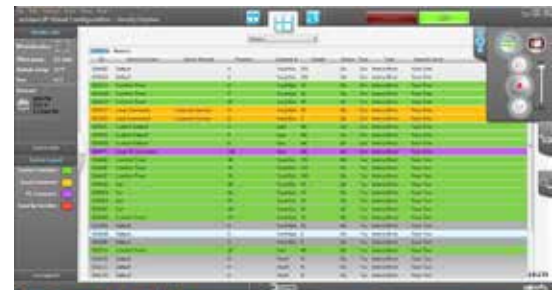
Graphical representation of building exterior

## Group View



Conceptualized view of groups that make up the system

## List View



Sortable database of system states

# Other System Interface Options

The following examples demonstrate other key features of the user interface that also simplify commissioning, operation and troubleshooting.

## Timer Configuration

Schedules based on animeo® IP's real-time and astronomic clocks are easy to configure. Proper configuration is guaranteed with a simplified interface and color coded confirmation.



Choose from preset time periods to create customized timers  
Green means there are no conflicts, red means actions are overlapping

## Virtual Keypads

Both facility managers and occupants have access to virtual keypads from their PCs, laptops, tablets or smartphones connected to the site's LAN for convenient local control.

Facility Manager View

Up, Down and Stop commands  
Slider for customized settings

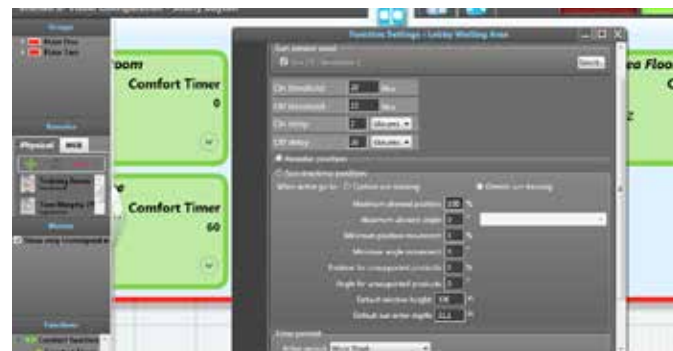
Occupant View

Slider for customized settings  
Up, Down and Stop commands

Access system presets like Openness levels and Energy Savings Mode

## Sun Tracking

animeo IP uses input from sun sensors to effectively automate solar shading. By compiling data from sun sensors, animeo IP can log historical light and temperature values to aid in the creation of more efficient energy management and glare reduction settings.



## Drag-and-Drop Configuration

Easily make adjustments to the system at any time with intuitive drag-and-drop organization of motors and sensors.

Drag and drop motors from one zone to another



# animeo® IP Product Line

## CONTROLLERS

animeo® IP Building Controller

#1822314



The animeo IP Building Controller features a sophisticated graphical user interface and built-in software applications for managing scheduled events, sun tracking, and virtual web-based keypads. An animeo IP Building Controller is required for every animeo IP installation. For larger animeo IP systems (over 200 motors), animeo IP Sub Controllers must be used.

animeo® IP Sub Controller

#1860201



The animeo IP Sub Controller expands the system's capacity beyond the initial 200 motors supported by the animeo IP Building Controller. Each additional Sub Controller supports 200 motors.

[www.somfysystems.com/animeo-ip](http://www.somfysystems.com/animeo-ip)

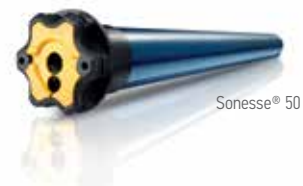
## MOTORS

Low Voltage Intelligent Motors



Somfy's low voltage intelligent motors are available in both quiet and ultra-quiet Sonesse® versions. Both require 24V DC power. Torque ranges from 2Nm-4Nm.

Line Voltage Intelligent Motors



Somfy's line voltage intelligent motors are available in both quiet and ultra-quiet Sonesse® versions. Both require 110V AC power. Torque ranges from 4Nm-35Nm.

[www.somfysystems.com/motors](http://www.somfysystems.com/motors)



## SENSORS

### Sensor Station

#9013726



The Sensor Station consists of an aluminum mast with pre-mounted and pre-wired outside sensor box, 4 sun sensors, wind sensor and an outside temperature sensor, and can be equipped with additional sensors.

### Compact Sensor

#9015047



The Compact Sensor consist of 3 sun sensors which can be oriented to East, South and West, as well as a wind sensor, outside temperature sensor and rain sensor.

[www.somfysystems.com/animeo\\_sensors](http://www.somfysystems.com/animeo_sensors)

## USER INTERFACES

### DecoFlex Keypads



DecoFlex Keypads provide an in-wall user interface for animeo® IP. The Keypad offers users a familiar way to adjust their environment for personal comfort without affecting the overall efficiency of the building. Available in both wired and wireless options.

### RTS Receiver for SDN

#1822294



The RTS Receiver for SDN connects directly to the SDN bus and is fully compatible with all RTS transmitters. Control up to 5 groups of motors on the network using an RTS transmitter. The Receiver obtains its power directly from the bus — no external power required.

[www.somfysystems.com/animeo-ip-user-interfaces](http://www.somfysystems.com/animeo-ip-user-interfaces)

## BUS POWER & DISTRIBUTION

### Bus and Sensor Station Power Supply #1822440



The Somfy Bus and Sensor Station Power Supply provides 24V DC power to the SDN bus. Each Power Supply can provide power to up to 100 bus line devices (excluding motors).

### 24V DC Power/Control Distribution Panels



Power/Control Distribution Panels supply power and communication to Sonesse® low voltage motors. Available in a 10 motor configuration.

[www.somfysystems.com/sdn-2-0](http://www.somfysystems.com/sdn-2-0)

**SOMFY®** is the leading global manufacturer of strong, quiet motors with electronic and app controls for interior and exterior window coverings. Over 270 million users worldwide enjoy the more than 150 million motors produced by Somfy. During the past 40+ years, Somfy engineers have designed products for both the commercial and residential markets to motorize window coverings such as interior shades, wood blinds, draperies, awnings, rolling shutters, exterior solar screens and projection screens. Somfy motorization systems are easily integrated with security, HVAC and lighting systems providing total home or building automation.



**SOMFY SYSTEMS INC  
SOMFY NORTH AMERICAN HEADQUARTERS**

121 Herrod Blvd.  
Dayton, NJ 08810  
P: (800) 22-SOMFY (76639)  
NJ: (609) 395-1300  
F: (609) 395-1776

**FLORIDA**

6100 Broken Sound Pkwy. N.W.  
Suite 14  
Boca Raton, FL 33487  
P: (800) 22-SOMFY (76639)  
F: (561) 995-7502

**CALIFORNIA**

15291 Barranca Parkway  
Irvine, CA 92618-2201  
P: (800) 22-SOMFY (76639)  
F: (949) 727-3775

**SOMFY ULC  
SOMFY Canada Division**

5178 Everest Drive  
Mississauga, Ontario L4W2R4  
P: (800) 66-SOMFY (76639)  
CN: (905) 564-6446  
F: (905) 238-1491

[www.somfysystems.com](http://www.somfysystems.com)

A BRAND OF **SOMFY** GROUP

L-0208



© Copyright Somfy Systems, Inc. 12/2016  
iPad and iPhone are registered trademarks of Apple, Inc. App Store is a service mark of Apple Inc.  
Images: Somfy SAS/ fanelie rosier-istockphoto/Harley Ellis Devereaux/ Quiltcraft Industries/iStock kunphel, absolutely\_frenchy

