

ZbGM – ZigBee to Glydea Module

Part #1870221



Overview:

The Somfy ZigBee Glydea Module (ZbGM) is a ZigBee routing device that resides as an endpoint within a designated ZigBee control network. It receives ZigBee transmissions and converts them to motor control commands for operating Somfy's Glydea 35 and Glydea 60E motors.



Features Summary:

- Join a network with one button press
- Connects directly to the motor for power
- Built on ZigBee HA 1.0 Stack
- One interface to one motor

Technical Specifications:

- Input: +5V DC (Supplied by Glydea motor)
- Power Consumption: 30mA max @ +5V DC
- Material: ABS
- Dimensions: 2 1/4" L X 1 5/16" W
- Maximum Range: ZigBee 75 feet radius
- Modular Cable Length: 2"
- Operating Temperature Range: Ambient Temperature
- FCC ID: XFFZGB357PA10
- Frequency: 2.4 GHz
- Shipping Weight: 1 lb.
- Control 4 Certified (Driver)
- Leviton Security Compatible

ZigBee Cluster Supported:

- Basic
- Identify
- Groups
- Scenes
- On/Off

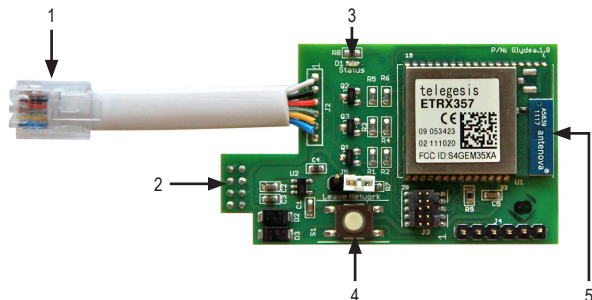
Optional Accessories:

- Glydea 35 Motor 1001536
- Glydea 60e Motor 1001538

What's in the Box:

- ZbGM
- Instructions

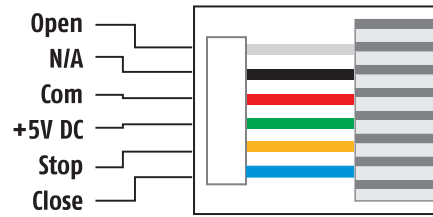
Connections and Indicators:



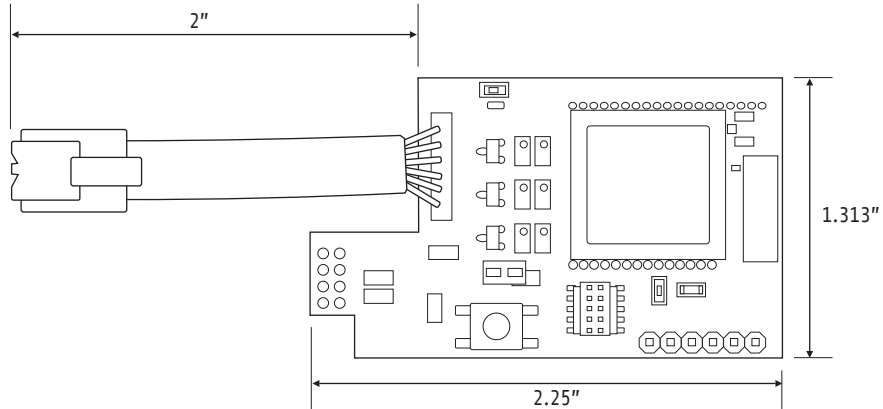
ELEMENT	FUNCTION
1 Communication Cable	RJ12 Modular cable for communication
2 8-Pin Header	8-Pin header for installation stability
3 LED	Off = Not connected to Network On = Connected to network
4 Setup Button	Identification into a ZigBee network; Manual operation of the shade
5 ZigBee Antenna	2.4GHz board antenna

Cable Pinouts:

RJ12

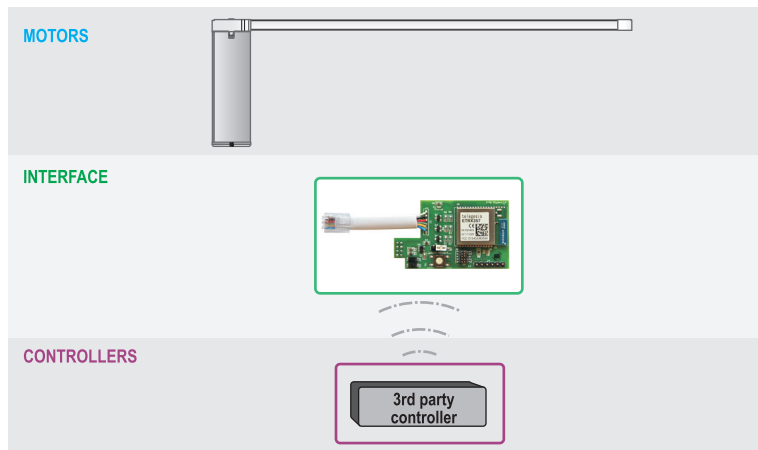


Dimensions:

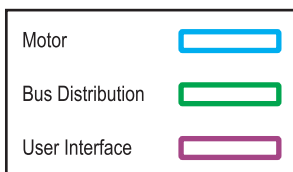


Wiring Best Practices:

Somfy does not recommend making custom cable with this device. Please ensure that the limits on the motor have been set and tested and all other desired features activated on the motor.



Component Types



Wiring Connection Types

