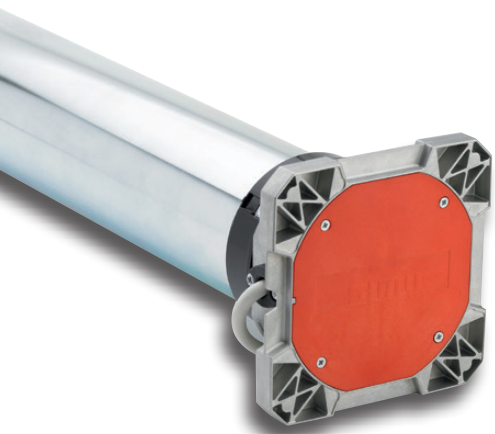




T8S & T8S DMI TUBULAR MOTORS

COMMERCIAL DOOR AND ROLLING SHUTTER CLOSURES



SLIM, **S**IMPLE AND **S**TRONG

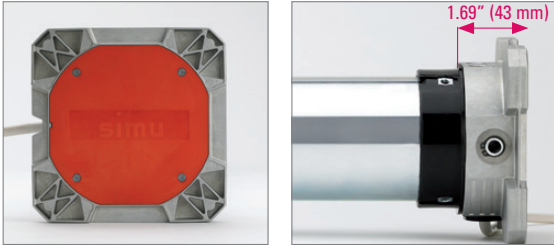
- Slimmest head on the market
- Support brackets mount in multiple orientations
- Smart manual override with slip clutch
- Simple to install, access and open
- Strong lifting capacity



THE T8S MOTOR

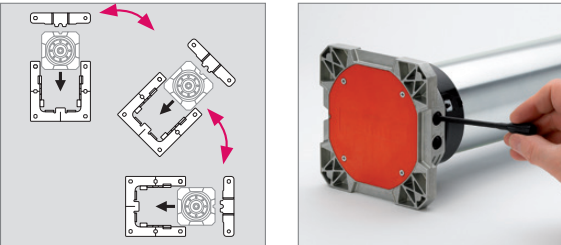
MAKES INSTALLATION EASIER

THE SLIMMEST HEAD ON THE MARKET



- 1.69" (43 mm) head with or without manual override
- Uses standard accessories
- No need to cut the end cap
- Larger opening allows for a wider shutter or door
- Offers the strong lifting capacity of a 200 Nm motor

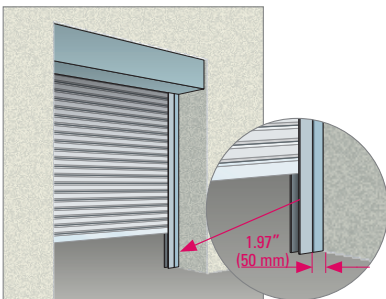
SUPPORT BRACKETS MOUNT IN MULTIPLE ORIENTATIONS



- Allows the motor to be installed in any position
- Provides easy access for setting limits and to the manual override
- Saves time installing and programming the motor

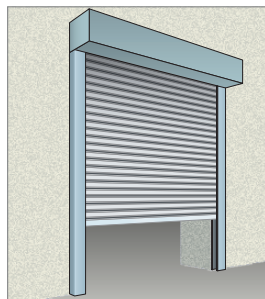
THE T8S MOTOR FITS ALL TYPES OF INSTALLATIONS

INSTALLATION BETWEEN WALLS



Smallest distance between the wall and guide rail

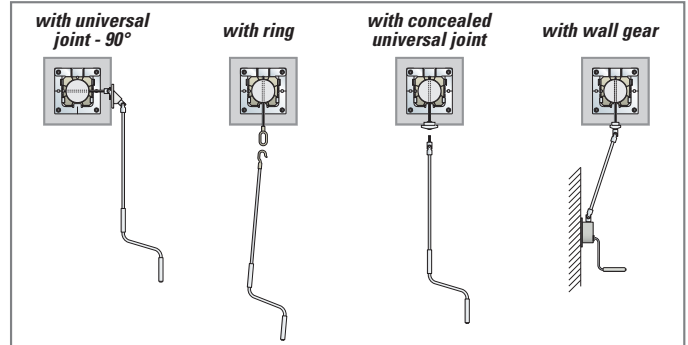
SURFACE-MOUNTED INSTALLATION



A MANUAL OVERRIDE SYSTEM

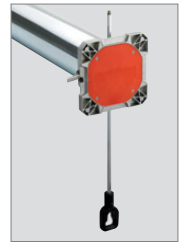
UNIQUE ON THE MARKET

INNOVATIVE MANUAL OVERRIDE WITH DIRECT DRIVE



Easier to engage manual override
No need to pull or push

- Allows use of rolling shutter accessories (7 mm hexagonal or 6 mm square)
- Allows use of universal joints
- Pass-through hole eliminates need to precisely cut the override shaft to size



EASY AND QUICK TO OPEN

- Intuitive manual override
- Automatic reset of manual override after use
- Operation of the manual override is confirmed by an immediate visible movement of the shutter or door

SHUTTER OR DOOR PROTECTION

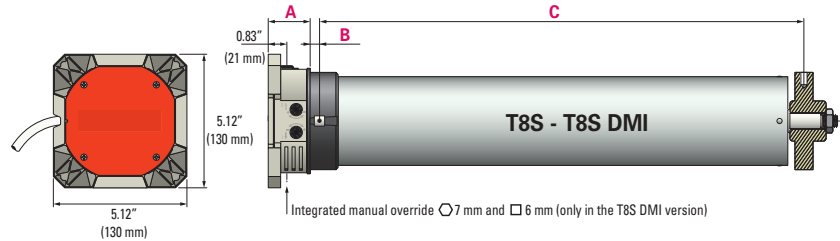
- In the event of a locked or jammed door in manual override, the slip clutch prevents the user from damaging the motor, shutter or door

TECHNICAL FEATURES

THERMAL CUT-OUT	4 minutes
T8S DMI OVERRIDE RATIO	190:1
PROTECTION INDEX	IP 44
OPERATING TEMPERATURE	14°F to 104°F (-10°C to 40°C)*
POWER CABLE 120V AC	0.7 meters (4xAWG19 wires, white 05 VVF)
CYCLES PER DAY	10, non-consecutive
MINIMUM DIAMETER	3.70" (94 mm)
TUBE	Zinc plated for superior corrosion resistance

*Extended temperature -4°F to 140°F (-20°C to 60°C) not to exceed 20% of cycle life.

DIMENSIONS



DESCRIPTION	WITH MANUAL OVERRIDE	LENGTH A	LENGTH B	LENGTH C
T8S 200		1.69" (43 mm*) 1.93" (49 mm**)	0.31" (8 mm*) 0.71" (18 mm**)	23.98" (609 mm*) 23.43" (595 mm**)
T8S DMI 200	x	1.69" (43 mm*) 1.93" (49 mm**)	0.31" (8 mm*) 0.71" (18 mm**)	25.94" (659 mm*) 25.39" (645 mm**)
T8S 200 ADJUSTABLE		1.69" (43 mm)	0.26" (6.5 mm)	24.04" (610.5 mm)
T8S DMI 200 ADJUSTABLE	x	1.69" (43 mm)	0.26" (6.5 mm)	26.00" (660.5 mm)

* Length with adaptor < 119 mm ** Length with adaptor ≥ 119 mm

PERFORMANCES

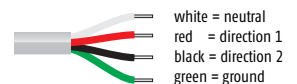
DESCRIPTION	TORQUE	SPEED	POWER	CURRENT	END-LIMIT CAPACITY	BASE DIAMETER	WEIGHT	REFERENCE
T8S 200	200 Nm	10 rpm	600 W	5.6 A	17 turns	3.70" (94 mm)	24.2 lbs (11 kg)	2008288
T8S DMI 200	200 Nm	10 rpm	600 W	5.6 A	17 turns	3.70" (94 mm)	27.5 lbs (12.5 kg)	2008302
T8S 200 ADJUSTABLE	200 Nm	10 rpm	600 W	5.6 A	17 turns	3.90" to 4.25" (99 to 108 mm)	24.2 lbs (11kg)	2008627
T8S DMI 200 ADJUSTABLE	200 Nm	10 rpm	600 W	5.6 A	17 turns	3.90" to 4.25" (99 to 108 mm)	27.5 lbs (12.5 kg)	2008626

POWER SUPPLY 120V AC - 60 HZ (US RANGE)



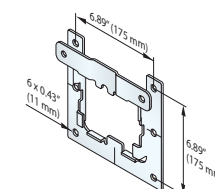
Type of cable

Wired
120V AC / 60Hz
4 conductor cable



ACCESSORIES

DESCRIPTION	DIMENSIONS	REFERENCE
Bracket	6.89" x 6.89" (175 mm x 175 mm)	9018069
94 mm Round Drive	3.70" (94 mm)	9001297
97 mm Round Set	3.82" (97 mm)	9001312
Chain Hoist for T8S DMI motors (without chain)	8" x 7.9" x 1.3" (202 mm x 200 mm x 32 mm)	9019458
Chain for Chain Hoist	33' (10 m)	9019460
Eye and Hex Shaft	.28" x 15.7" (7 mm x 400mm)	9018569



Accessories sold separately



AN INNOVATION ...










THE RESULT OF 60 YEARS OF EXPERTISE!

Since 1952, SIMU has built innovative, reliable tubular motors for the rolling shutter, retractable awning, exterior solar shade and commercial door markets. SIMU adheres to the strictest standards of ISO 9001 certification to ensure high quality products.

Dedicated to 100% quality by testing 100% of motors.



The Hz radio protocol is world renowned for its rolling code technology and encrypted protection that provides complete safety and security.

RADIO	DIRECT WIRE	COMMERCIAL
<p>HZ UNIVERSAL MOTOR RECEIVER</p>  <p>1810602</p>	<p>TOGGLE SWITCHES*</p>  <p>Ivory 1800382 White 1800383</p>	<p>SMART MOTOR CONTROL</p> <p><i>The Smart Motor Control supports most standard commercial door controls</i></p>  <p>2005720</p>
<p>HZ REMOTE CONTROL</p>  <p>Silver - 1 Channel 2006138 White - 5 Channel 2006143</p>  <p>Silver - 16 Channel 2007351 Key Fob - 4 Channel 2008329</p>	<p>DECORA SWITCHES*</p>  <p>Ivory 1800377 White 1800378</p> <p><small>* Maintained switches also available.</small></p>	<p>PHOTO EYES</p>  <p>2005630</p>
	<p>COMMERCIAL KEY SWITCHES</p>  <p>2005614 2005616</p>	<p>IGC RTS RADIO RECEIVER</p>  <p>1810481</p>

Represents random sample of control options.



SOMFY NORTH AMERICAN HEADQUARTERS
 121 Herrod Blvd.
 Dayton, NJ 08810
 P: (800) 22-SOMFY (76639)
 NJ: (609) 395-1300
 F: (609) 395-1776

FLORIDA
 6100 Broken Sound Pkwy. N.W.
 Suite 14
 Boca Raton, FL 33487
 P: (800) 22-SOMFY (76639)
 F: (561) 995-7502

CALIFORNIA
 15291 Barranca Parkway
 Irvine, CA 92618-2201
 P: (800) 22-SOMFY (76639)
 F: (949) 727-3775

SOMFY CANADA DIVISION
 5178 Everest Drive
 Mississauga, Ontario L4W2R4
 P: (800) 66-SOMFY (76639)
 CN: (905) 564-6446
 F: (905) 238-1491