

SOMFY DIGITAL NETWORK™ (SDN) RS485 MODULE for DRAPERY MOTORS

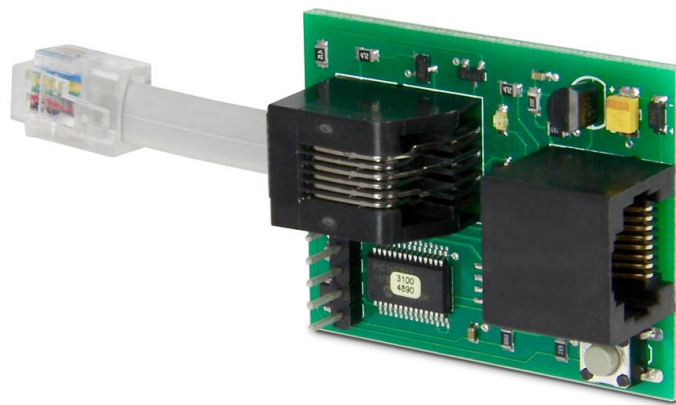


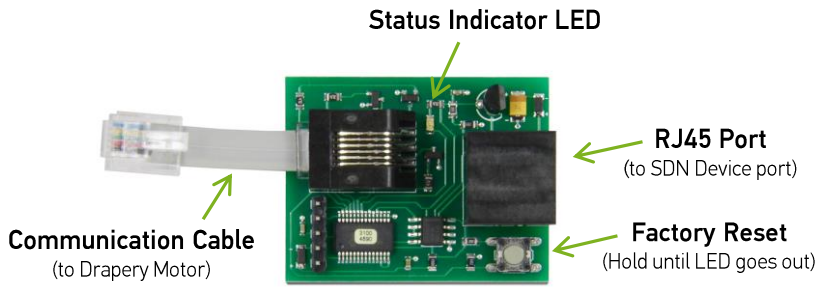
TABLE OF CONTENTS

I.	OVERVIEW	3
	DESCRIPTION	
	CONNECTIONS & LEDs	
	MOUNTING & POWER	
II.	WIRING	4
III.	FEATURES	5
	PERCENTAGES	
	FEEDBACK	
	MOTOR LABEL	
	LOCK POSITION	
IV.	SDN CONFIGURATION SOFTWARE	6
V.	UAI PLUS CONFIGURATION SOFTWARE	7
VI.	POE CONFIGURATION SOFTWARE	8

I. OVERVIEW

The RS485 Module for Drapery Motors enables control of Irismo™ and Glydea® Motors through RS485 commands within the Somfy Digital Network™ (SDN) System.

CONNECTS & LED'S



LED BEHAVIOR:

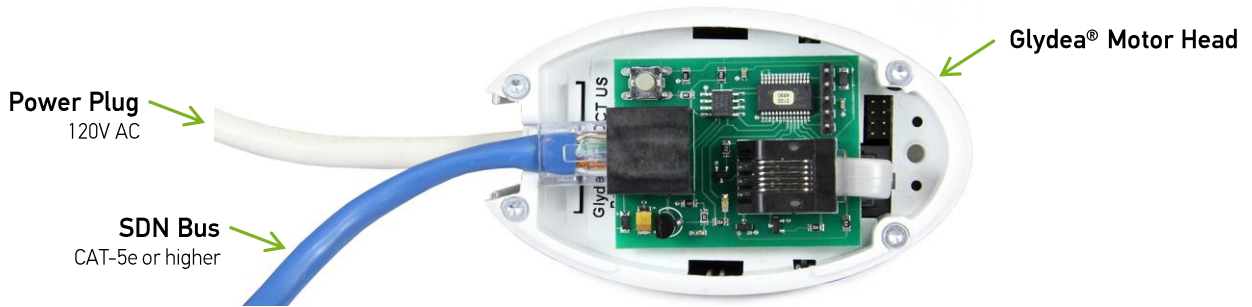
FLASHING RED:
SDN data transfer

ON for ONE SECOND:
When Reset Button is pressed,
the card has been reset

OFF:
Normal operation, with no
data being transferred
(when connected to power)

MOUNTING & POWER

The RS485 Module for Drapery Motors is connected to the RJ12 on the bottom of the Drapery Motor.



**Module Enclosure for Irismo #9021132 purchased separately.*

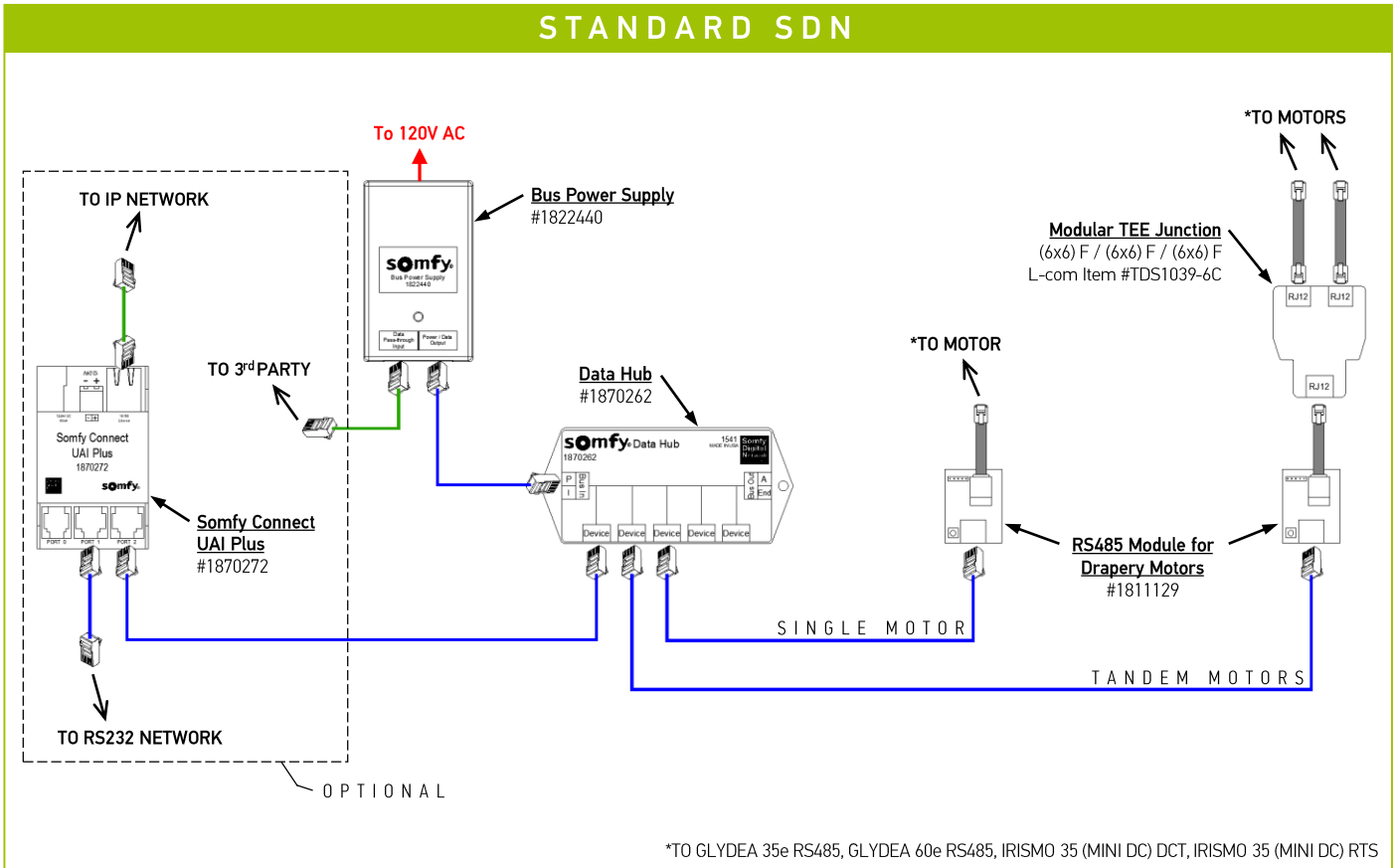
II. WIRING

NETWORK
Standard CAT-5e or higher

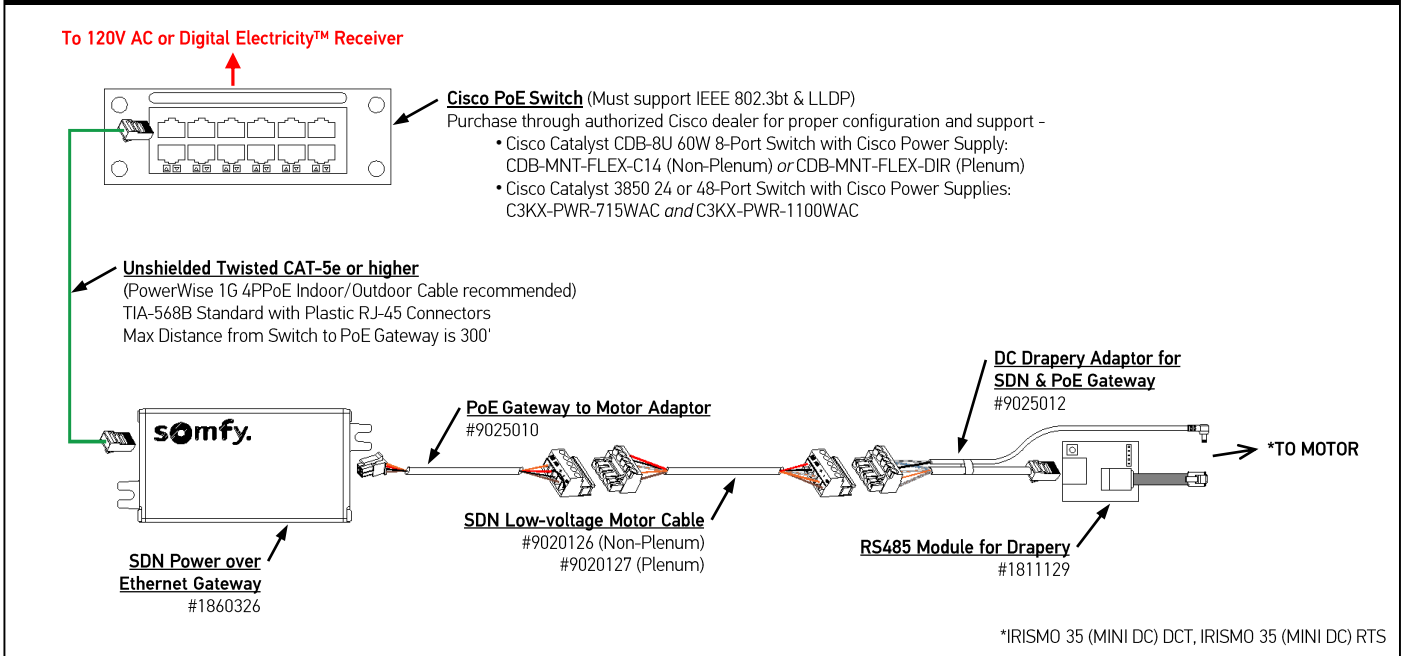
SDN BUS
Standard CAT-5e or higher

DATA
6 Cond. 26AWG

STANDARD SDN



SDN POWER OVER ETHERNET



III. FEATURES

PERCENTAGES

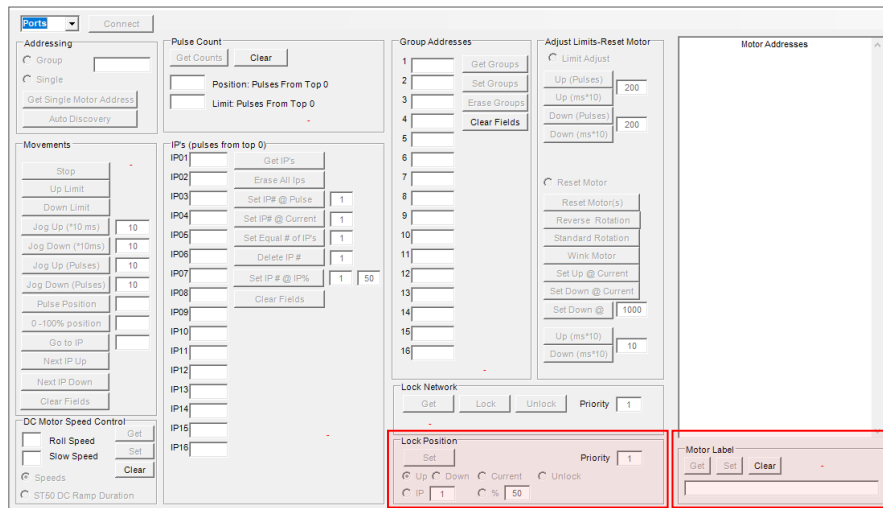
- 0% will send the Motor completely open, and any Percentage from 1-100 will send the Motor completely closed.

FEEDBACK

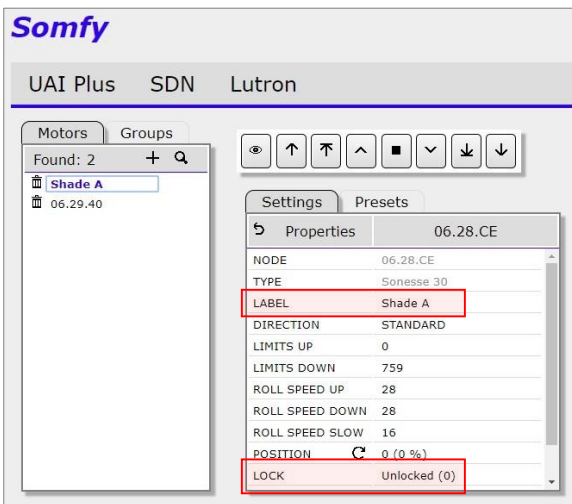
- Positions will always be 0% or 0 Pulse Counts for open and 100% or 1000 Pulse Counts for closed. Anytime the Stop button is pressed it will report 50% or 500 Pulse counts regardless of Motor position.
- The RS485 Module for Drapery Motors support feedback based on it's expected position and will NOT report if a drapery has been moved manually by hand. (IE: Open, Closed or 50% are the only feedback that it will report and it is based on the last button pressed) This should not be relied on to give accurate feedback.

MOTOR LABEL & LOCK POSITION

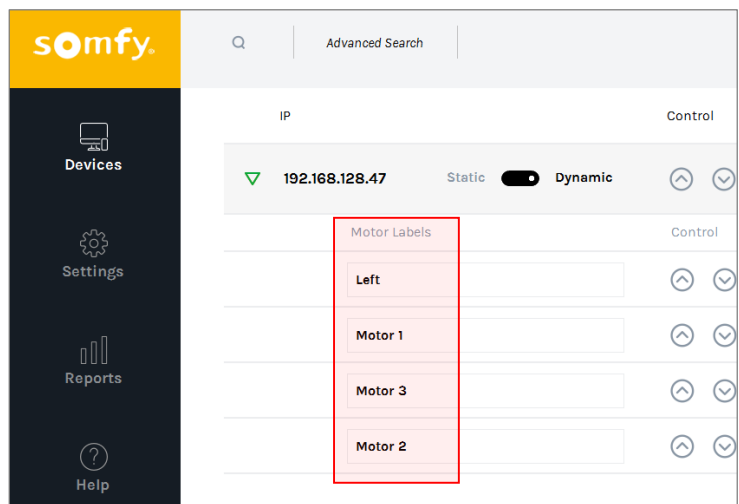
- Each RS485 Module for Drapery Motors can be given an individual label or a lock position.



SDN CONFIGURATION



UAI PLUS CONFIGURATION



POE CONFIGURATION

* Lock Position unavailable

IV. SDN CONFIGURATION

PARTS NEEDED

SOFTWARE

- Somfy Digital Network™ (SDN) Motor Configuration Software

**When possible, install as administrator*

Software can be downloaded from: <https://www.somfypro.com/services-support/software>

For a complete walkthrough of the installation, set up, and features of the configuration tool, reference the SDN Motor Configuration Software Programming Guide

(Included in the software download zip folder)

HARDWARE

- Compatible Drapery Motor
- [SDN RS485 Module for Drapery Motors #1811129](#)
- [USB-to-RS485 Adaptor for SDN #9015260](#)
- CAT-5e or higher patch cable terminated TIA 568B – Suitable length to connect Laptop to SDN Bus
- Laptop PC with Windows 7 or higher

CONTROL

Control an RS485 Module for Drapery Motor by it's Node ID:

- 1) Enter a single Motor ID in the blank field under the [Addressing](#) section.
- 2) Select the **Single** radio button to communicate with that single Motor.

Control an RS485 Module for Drapery Motor by Group Addresses:

- 1) Use slots 1-6 under the [Group Addresses](#) section to add the RS485 Module for Drapery Motor to a Group:
 - Create a new Group Address: enter 6 hexadecimal (0-9 and/or A-F) characters in one of the slots and then click the **Set Groups** button.
 - Repeat using the same Group Address for each RS485 Module for Drapery Motor that should belong in a Group together.
Note: The RS485 Module for Drapery is limited to 6 Groups per Module; all other RS485 Motors can be added to up to 16 Groups per Motor.
- 2) Type the new Group Address in the blank field under the [Addressing](#) section.
- 3) Select the **Group** radio button to communicate with all of the Motors in that Group.

IV. UAI PLUS CONFIGURATION

PARTS NEEDED

SOFTWARE

- Programming is done through the internal web GUI
**Can be accessed only with Google Chrome 59.0.3071 or higher*

For a complete walkthrough of the set up and features of the UAI Plus, reference the Somfy Connect UAI Plus Programming Guide

This can be downloaded here: <https://www.somfy.com/en-us/products/1870272/somfy-connect-uai-plus>

HARDWARE

- Compatible Drapery Motor
- SDN RS485 Module for Drapery Motors #1811129
- Somfy Connect UAI Plus #1870272
- CAT-5e or higher patch cable terminated TIA 568B – Suitable length to connect Laptop to SDN Busline
- Laptop PC with Windows 7 or higher and Google Chrome 59.0.3071 or higher

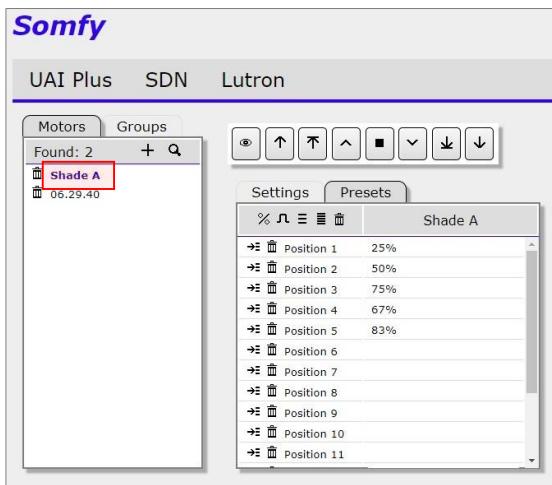
CONTROL

Control a RS485 Module for Drapery Motor by it's Node ID:

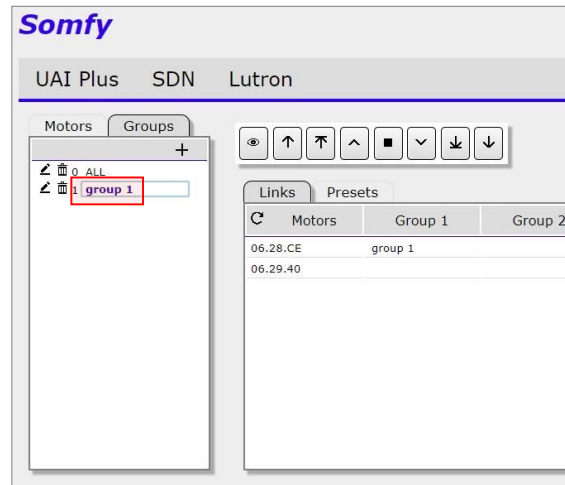
- 1) Open the SDN Commissioning page, and click the magnifying glass to search for all Motors and RS485 Modules for Draperies on the busline; this will list all of the found Motors.
- 2) Select one of the Motors, and use the directional buttons to move the Motor.

Control a RS485 Module for Drapery Motor by Group Addresses:

- 1) Create new Groups, and then add the found Motors to the Groups accordingly.
- 2) Select one of the Groups, and use the directional buttons to move the Group as one.



BY NODE ID



BY GROUP ADDRESS

V. POE CONFIGURATION

PARTS NEEDED

SOFTWARE

- SDN PoE Gateway Configuration Software

**When possible, install as administrator*

Software can be downloaded from: <https://www.somfypro.com/services-support/software>

For a complete walkthrough of the installation, set up, and features of the configuration tool, reference the SDN Power over Ethernet Gateway Programming Guide

(This can be downloaded from the same page as the software)

HARDWARE

- Compatible Drapery Motor
- [SDN RS485 Module for Drapery Motors](#) #1811129
- [SDN Power over Ethernet Gateway](#) #1860326
- Gateway to Motor Adaptor:
 - [PoE Gateway to Motor Adaptor](#) #9025010 *or* [PoE Gateway to Motor & Keypad Adaptor](#) #9025011
 - [\(PoE Gateway Kit \[Gateway and Motor Adaptor Combo\]](#) #1870445)
- Power over Ethernet Switch (Must support IEEE 802.3bt & LLDP)
 - Cisco Catalyst CDB 8U Switch with Cisco Power Supply:
CDB MNT FLEX C14 (Non Plenum) or CDB MNT FLEX DIR (Plenum)
 - or*
 - Cisco Catalyst 3850 Switch with Cisco Power Supplies:
C3KX PWR 715WAC and C3KX PWR 1100WAC
- [SDN Low-voltage Motor Cable](#) Non Plenum #9020126, Plenum #9020127
- [Non-Printed Female Weidmuller Connector](#) #9025113
- [DC Drapery Adaptor for SDN & POE Gateway](#) #9025012
- Laptop PC with Windows 7 or higher & ethernet port **firewall must be disabled while using*

CONTROL

**Make sure the Cisco switch is configured correctly before continuing. See the complete Programming Guide for further instructions.*

Control a RS485 Module for Drapery Motor by it's Node ID:

- 1) Using the SDN PoE Gateway Configuration Software, click the magnifying glass button that the top of the Devices page:
 - This will discover and list all of the PoE Gateways found on the network.
 - All of the PoE Gateways with Motors connected will appear first on the list, followed by any found Gateways without Motors.
- 2) Click on the Gateway to show the SDN RS485 Module for Drapery Motors that is connected to that Gateway.
- 3) You can use the controls on screen or an animeo IP Keypad connected to the Gateway.

Note: Each PoE Gateway will support one Drapery Motor with the RS485 Module for Drapery Motors; the Motor Daisy Chain Cable can not be used with Drapery Motors.

DOCUMENT PREPARED BY SOMFY NORTH AMERICA PROJECT SERVICES

Version 19.05

May 2019

FOR QUESTIONS OR ASSISTANCE PLEASE CONTACT TECHNICAL SUPPORT:

(800) 22-SOMFY (76639)

technicalsupport_us@somfy.com

SOMFY SYSTEMS INC

SOMFY NORTH AMERICA HEADQUARTERS

121 Herrod Blvd.
Dayton, NJ 08810

FLORIDA

1200 SW 35th Ave.
Boynton Beach, FL 33426

CALIFORNIA

15301 Barranca Pkwy.
Irvine, CA 92618-2201

CANADA

5178 Everest Dr.
Mississauga, Ontario L4W2R4

www.somfysystems.com