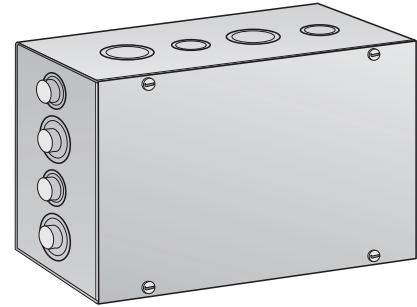


GROUP CONTROL SYSTEM II (GCS-II)

DESCRIPTION

The Group Control System-II (GCS-II) permits low voltage control of up to four SOMFY operators with one or more switches, from one or more locations. Optional low voltage control can be accomplished using SOMFY's Decorator Somfy-Matic™, Decorator Comfort Control or Radio Remote Control Kit. The GCS-II offers only group control, and does not have the capability of operating each motor individually. The Group Control System-II is UL and cUL approved.



For applications requiring more than 4 motors operated by the same switch, the GCS-II can be daisy-chained by way of the low voltage switch terminals.

MECHANICAL SPECIFICATIONS

Overall Dimensions: L: 8 in. W: 10 in. D: 4 in.

ELECTRICAL SPECIFICATIONS

Voltage Ratings:

INPUT: Line Voltage: 115 VAC +/- 10% 50/60 Hz 20A

Low Voltage: 12 VDC 0.3A

OUTPUT: 115 VAC 5A (Each motor)

Fuses: (Motor) 2 x 10A (One per two motors)
(Low Voltage) 1/2A

Approvals:

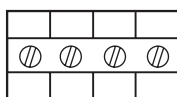
Conforms to UL508 standard for industrial controls
Complies with the National Electrical Code Standards (NEC)

HOME AUTOMATION INTERFACE

MODULAR CONNECTOR

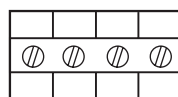


SENSORS CONNECTION



12	W	S
V	I	U
D	N	N
C	D	

LOW VOLTAGE SWITCH CONNECTION



U	D	C
P	O	O
	W	M
	N	M
		O
		N

Low voltage terminals are provided on the GCS-II for interfacing to home automation or other third party systems. To activate an Up command, a maintained dry contact (relay) closure is required between the UP input and COMMON. This contact should remain closed for approximately 3 minutes to ensure full travel of the window treatment. Similarly, to activate a Down command, a contact closure is required between the DOWN and COMMON terminals. The window treatment will stop when the contact closure is released.